

CHRONOS SYSTEMS SOLUTIONS



Portal Development with Domino.Doc customization



Chronos Systems completed a portal development project for the headquarters of a multinational blue-chip manufacturing organization.

Development was based on the Lotus Domino.Doc infrastructure by fully customizing the user interface and implementing new functionalities on top of Domino.Doc built-in functionalities.

is considered a centralized location of customer-related information.

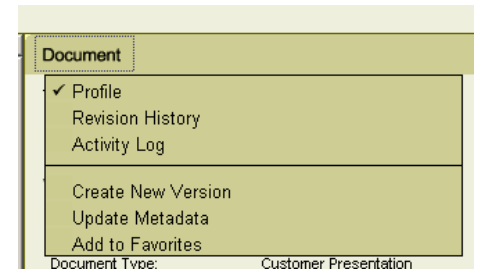
Users of the site are able to capture, organize, access and share the information they need to perform their sales tasks faster.

PROJECT FEATURES

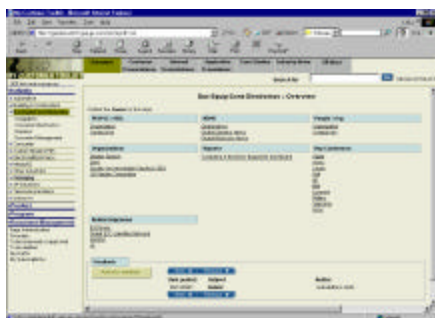
Document Management

The site is based on the document management features of Domino.Doc. The most important functions include:

- Setup new document libraries
- Definition of document life cycle steps: tracking and managing documents from initial drafts through reviews to a final, approved document; approval and review processes can also be defined.

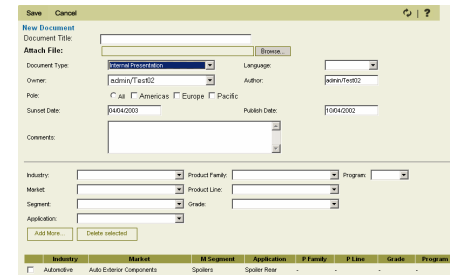


- Document profiles store meta-data information to each document including categorization of the documents



BUSINESS OBJECTIVES OF THE PROJECT

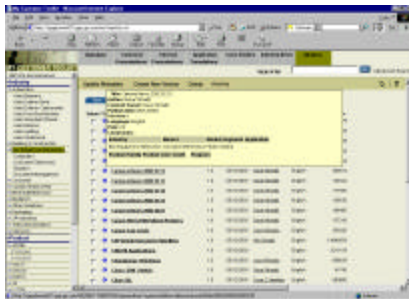
The most important business objective of the project was to provide a portal-like site with strong document and content management capabilities, which



- Check-in, check-out of documents for avoiding mutual modification of the same document by different users
- Version control: different versions of the same document are stored; no doubt which version of the document

is the most current and accurate

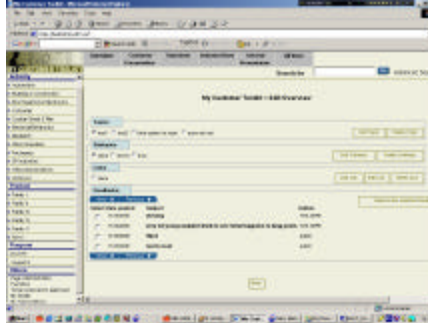
- Document history can be reviewed
- Favorites: personalized list of favorites documents
- Subscription: sending email notifications upon changes in selected document types
- Assignment of multiple, multi-level hierarchies
- Filtering documents based on hierarchies
- Simple and advance search



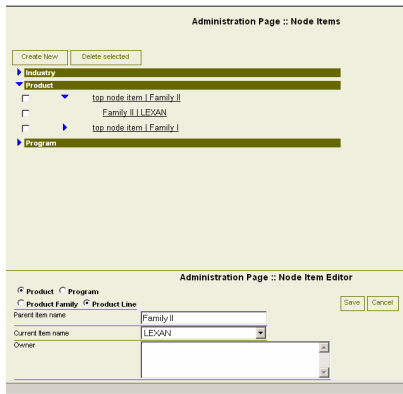
- Visitor and download statistics are available per hierarchy node, user, time, document categories, etc.

Content Management

Content can be assigned to each hierarchy item. Content can be simple text, link or attached file.



A simple administration tool makes it possible to modify uploaded content.



User/Group management

A User group management module is not part of the application the corporate user directory is used.



Additional functions of the site

There are some additional functions of the site, which are not based on Domino.Doc capabilities:

- Site Map
- On-line help
- Application log

Operational Environment

The project was implemented on the following platform based on the following Software Architecture.

- Operating system:** Windows 2000 Server + SP3
- Application Server:** Lotus Domino R5.06-8
- Document Management:** Domino.Doc R3.1
- Browser compatibility:** Internet Explorer 5.0 and above